



# YANMAR

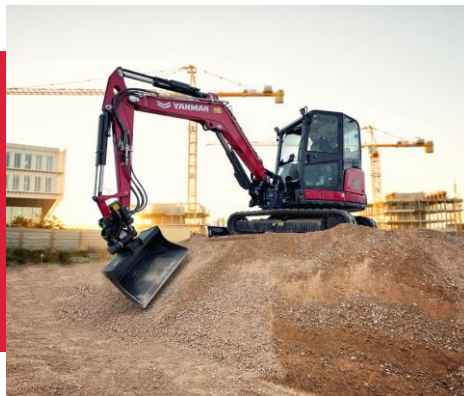


MINI EXCAVATOR

## SV60

**A winning combination of technology and innovation**, the SV60-6B offers the performance of a midi excavator while reaping the benefits of a compact excavator. Designed to work effectively on a wide variety of sites, it combines compactness, power, versatility, reliability and durability. Featuring numerous design touches for operator safety and comfort, advanced standard equipment includes a rear-view camera, a progressive ViPPS hydraulic system, an adjustable air-suspended seat, and automatic two-speed drive motors.

- **URBAN POWERHOUSE**
- **BUSINESS CLASS CABIN**
- **CLEAN STAGE V ENGINE**
- **SMOOTH AND SIMULTANEOUS MOVEMENT**
- **MAXIMUM STABILITY**
- **HIGH RELIABILITY**
- **OPTIMAL SAFETY**





# TECHNICAL SPECIFICATIONS

## [ WEIGHT +/-2% (EN STANDARDS) ]

	Weight	Ground pressure
Operating weight (Rubber crawlers / Steel crawlers)	5655 / 5685 kg	0,314 / 0,320 kgf/cm <sup>2</sup>
Transport weight (Rubber crawlers / Steel crawlers)	5580 / 5610 kg	0,310 / 0,316 kgf/cm <sup>2</sup>
With FOPS II protection	+98 kg	-
With additional counterweight	+200 kg	-

## [ ENGINE & HYDRAULIC SYSTEM ]

Type	Yanmar 4TNV86CT-PBVA
Net Power	33,5 kW - 2200 rpm
Gross Power	34,5 kW - 2200 rpm
Maximum pressure	245 bar
1 double variable displacement piston pump	2 x 45,8 l/min
1 gear pump	37 l/min
1 gear pump for pilot line	10,8 l/min

## [ PERFORMANCE ]

Travel speed	2,2 / 4,7 km/h
Digging force (short arm/long arm)	24,8 kN / 27,3 kN
Digging force (bucket)	41,9 kN
Noise level	LwA: 78 dBA/LpA: 94 dBA

# DIMENSIONS

Overall length	5595/5675* mm	Max. digging depth – Blade lowered	3910/4200* mm
Overall length with blade at the back	6155/6235* mm	Max. digging reach	6135/6410* mm
Overall height	2540 mm	Max. unloading height	4280/4460* mm
Overall width	1990 mm	Boom swinging (base to left/right)	70°/70°
Length of track on ground	2070 mm	Arm length	1650/1940* mm
Blade distance	1890 mm	Rear turning radius	1325 mm
Minimum ground clearance	345 mm	Rear turning radius with add. counterweight	1405 mm

\*With long arm

Yanmar Compact Equipment EMEA

GB\_SPEC\_SV60-6B\_1125



[www.yanmar.com](http://www.yanmar.com)

**BUILDING  
WITH YOU**