



YANMAR

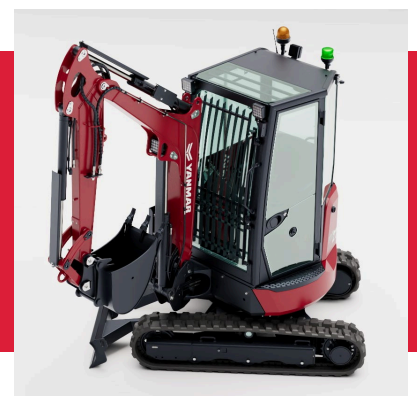


MINI EXCAVATOR

ViO27

Designed for maximum compactness, the ViO27 combines a true zero tail swing, a narrow undercarriage and a wide left boom offset, allowing confident operation in the tightest environments. Operator comfort comes next, with easy cab access and excellent all-round visibility creating a safe and intuitive working space. Performance is equally impressive, with strong digging and traction forces, generous digging depths and smooth, responsive hydraulics ensuring high productivity in everyday applications.

- UNCOMPROMISED COMPACTNESS
- EXCEPTIONAL OPERATOR COMFORT
- POWERFUL DIGGING
- VERSATILE MANOEUVRABILITY
- EFFORTLESS TRANSPORTABILITY





TECHNICAL SPECIFICATIONS

[WEIGHT +/-2% (EN STANDARDS)]

	Cabin		Canopy	
	Weight	Ground pressure	Weight	Ground pressure
Operating weight (rubber/steel tracks)	2 745/2 845 kg	0.32/0.33 kgf/cm ²	2 650/2 755 kg	0.31/0.32 kgf/cm ²
Transport weight (rubber/steel tracks)	2 565 kg/ 2 665 kg	0.30/0.31 kgf/cm ²	2 470 kg/ 2 575 kg	0.29/0.30 kgf/cm ²
With additional counterweight	+ 90 kg	-	+ 90 kg	-

[ENGINE & HYDRAULIC SYSTEM]

Type	Yanmar Diesel 3TNV80F - ZXKBVA
Net Power	17,7 kW at 2400 rpm
Gross Power	18,4 kW at 2400 rpm
Maximum pressure	210 bar
1 double variable displacement piston pump	2 x 32,4 l/min
1 gear pump	21,6 l/min
1 gear pump for pilot line	10,8 l/min

[PERFORMANCE]

Travel speed	2,5 / 4,4 km/h
Digging force (short arm/long arm)	16,5 kN / 13,6 kN
Digging force (bucket)	21,4 kN
Noise level	LwA: dBA/LpA: dBA

DIMENSIONS

Overall length	4 165/4 180* mm	Max. digging depth – Blade lowered	2 775/3 025 mm
Overall length with blade at the back	4 525/4 540* mm	Max. digging reach	4 595 mm/4 835* mm
Overall height	2 470/2 465** mm	Max. dumping height	2 770 mm/ 2 930 kg
Overall width	1 500/ 1 550 mm	Boom swinging (base to left/right)	75°/60°
Length of track on ground	1 570 mm	Arm length	1 150 / 1 400* mm
Blade distance	1 380 mm	Rear turning radius	750 mm
Minimum ground clearance	325 mm	Rear turning radius with add. counterweight	825 mm

*With long arm
**Cabin

Large track

Yanmar Compact Equipment EMEA

GB_SPEC_ViO27-7_0126



www.yanmar.com

**BUILDING
WITH YOU**